



**REGIONAL SPECIALISED METEOROLOGICAL CENTRE-TROPICAL CYCLONES, NEW DELHI
TROPICAL WEATHER OUTLOOK**

DEMS-RSMC SPECIAL TROPICAL CYCLONES NEW DELHI DATED 20.07.2022

TROPICAL WEATHER OUTLOOK FOR NORTH INDIAN OCEAN (THE BAY OF BENGAL AND ARABIAN SEA) VALID FOR NEXT 120 HOURS ISSUED AT 0600 UTC OF 20.07.2022 BASED ON 0300 UTC OF 20.07.2022.

BAY OF BENGAL:

SCATTERED TO BROKEN LOW AND MEDIUM CLOUDS WITH EMBDDDED INTENSE TO VERY INTENSE CONVECTION LAY OVER NORTHWEST BAY OF BENGAL, EASTCENTRAL & SOUTHEAST BAY OF BENGAL AND ANDAMAN SEA. SCATTERED LOW AND MEDIUM CLOUDS WITH EMBEDDED MODERATE TO INTENSE CONVECTION LAY OVER NORTHEAST BAY OF BENGAL, WESTCENTRAL BAY OF BENGAL OFF ANDHRA PRADESH COAST, SOUTHWEST BAY OF BENGAL, ARAKAN COAST, GULF OF MARTABAN AND TENASSERIM COAST.

PROBABILITY OF CYCLOGENESIS (FORMATION OF DEPRESSION) DURING NEXT 120 HRS:

24 HOURS	24-48 HOURS	48-72 HOURS	72-96 HOURS	96-120 HOURS
NIL	NIL	NIL	NIL	NIL

ARABIAN SEA:

YESTERDAY'S CYCLONIC CIRCULATION OVER NORTHWEST ARABIAN SEA OFF NORTH OMAN COAST MOVED WESTWARDS AND LAY OVER SAUDI ARABIA AT 0300 UTC OF TODAY, THE 20TH JULY, 2022.

SCATTERED TO BROKEN LOW AND MEDIUM CLOUDS WITH EMBDDDED CONVECTION LAY OVER YEMEN AND ADJOINING SAUDI ARABIA. SCATTERED TO BROKEN LOW AND MEDIUM CLOUDS WITH EMBDDDED INTENSE TO VERY INTENSE CONVECTION LAY OVER SOUTHEAST ARABIAN SEA LAKSHADWEEP ISLANDS AREA AND COMORIN AREA. SCATTERED LOW AND MEDIUM CLOUDS WITH EMBEDDED ISOLATED WEAK TO MODERATE CONVECTION LAY OVER REST OF ARABIAN SEA.

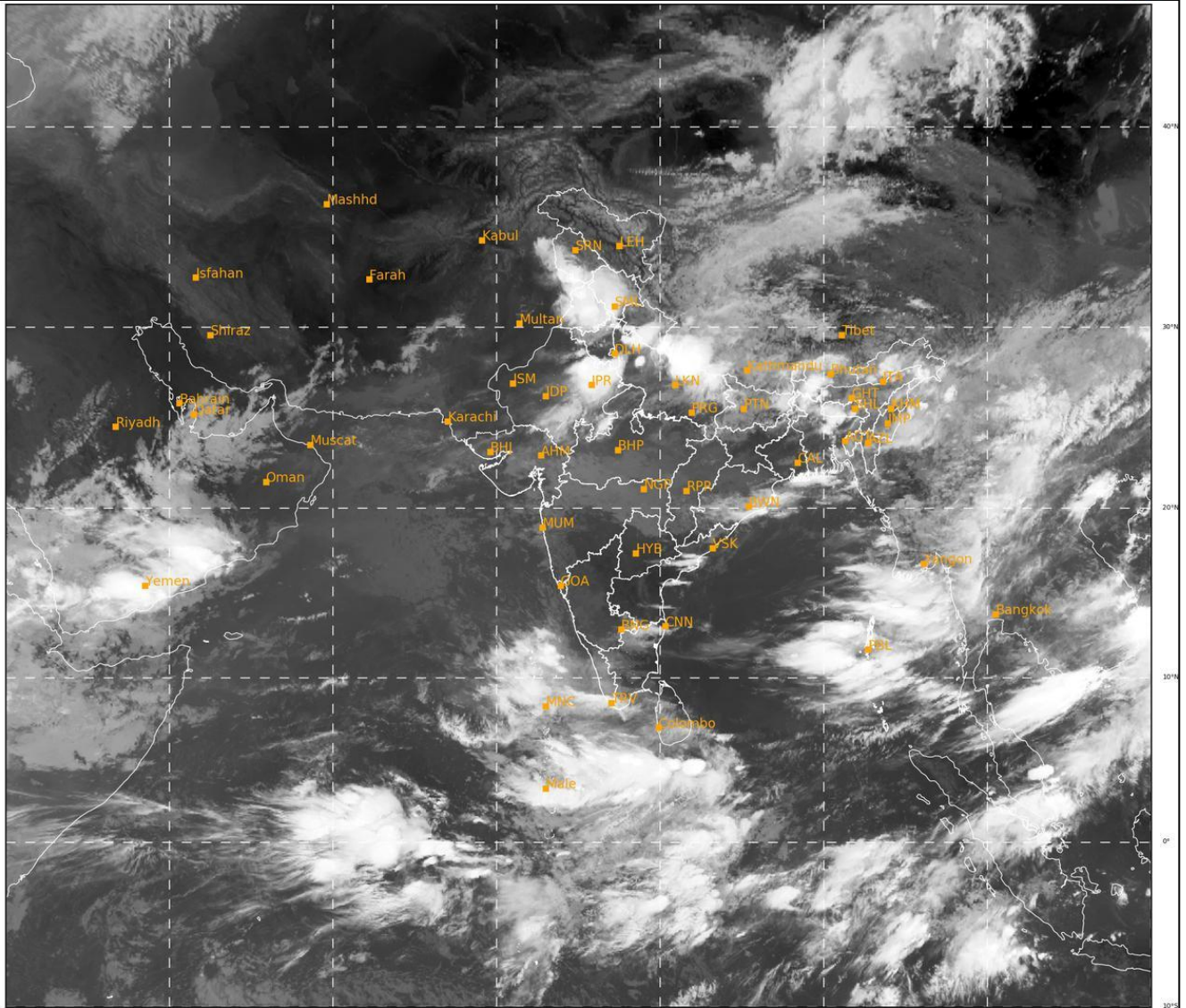
PROBABILITY OF CYCLOGENESIS (FORMATION OF DEPRESSION) DURING NEXT 120 HRS:

24 HOURS	24-48 HOURS	48-72 HOURS	72-96 HOURS	96-120 HOURS
NIL	NIL	NIL	NIL	NIL

REMARKS: NIL

SAT : INSAT-3D IMG
IMG_TIR1 10.8 um
L1C Mercator

20-07-2022/(0300 to 0326) GMT
20-07-2022/(0830 to 0856) IST



381

938

IMD, DELHI

Cloud distribution: (a) Isolated: <25%, Scattered:25-50%, Broken: 51-75%, Solid:>75%, Convection Intensity: (a) Weak: Cloud Top Temperature (CTT) >-25°C, (b) Moderate: CTT: - 25°C to -40°C, (c) Intense: CTT: - 41°C to -70°C and (d) Very Intense: : Less than -70°C
PROBABILITY OF CYCLOGENESIS (FORMATION OF DEPRESSION): NIL: 0%, LOW: 1-33%, , MODERATE: 34-66% AND HIGH: 67-100%
This is a guidance Bulletin for WMO/ESCAP Panel Member countries. Visit respective National websites for Country specific Bulletins